



# GUIDE

See the heat of 10,800 pixels in 1 second

**T Series**

Entry-level Portable Thermal Camera

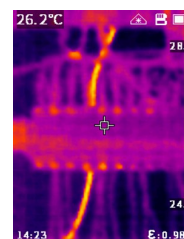
## Introduction

T Series Entry-level Thermal Image Camera is an affordable temperature measuring tool. It perfectly overcomes the shortcomings of the single spot infrared thermometers and helps work smarter, safer and faster. Equipped with Guide's self-developed 120x90 WLP IR modules, T120 series thermal cameras can display radiometric data of 10,800 pixels instantly which helps quickly detect large areas and pinpoint fault spots accurately.

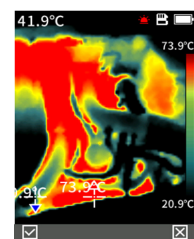
## Features

- Boot-up in 1 second
- 2.4 inch Large Display
- Good-handle Buttons
- 8-hour Battery Life
- 2-hour Quick Charge
- IR/Visible/Laser Indicator
- Trigger Button
- 2-meter Drop

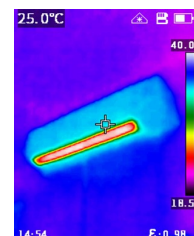
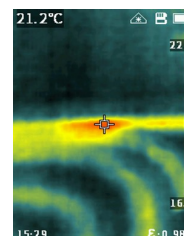
## Applications



Electrical Application



Facilities maintenance



HVAC Inspection

## Specifications

Product model	T120	T120V
<b>Imaging and optics</b>		
Detector type	VOx, 7.5 to 14µm	
Infrared resolution	120 × 90@17µm	
NETD	≤60 mK	
Infrared frame rate	25 Hz / 9 Hz	
Focal length	2.28 mm	
Field of view	50° × 38°	
IFOV	7.46mrad	
Minimum object distance	0.5 m	
D:S	130:1	
Focusing mode	Focus-free	
<b>Measurement and analysis</b>		
Measurement range	Support auto-switching: -20°C to 150°C, 100°C to 400°C	
Measurement accuracy	±2°C or ±2%, whichever is greater	
Analyzed target	Center spot and 3 areas	
Tracking / Alarm	Full screen maximum/minimum temperature tracking; The maximum or minimum temperature tracking of analyzed target; full screen temperature threshold alarm (image)	
Temperature measuring parameters	Emissivity, reflected temperature, target distance	
<b>Image display</b>		
Display screen	2.4" LCD	
Digital camera	/	70,000 pixels
Image mode	IR	IR, VIS and PIP
Image adjustment	Level span mode: Automatic	
Color palettes	Iron Red, White Hot, Arctic, Rainbow 2, Hot Iron, Rainbow 1	
<b>Functions</b>		
Recording function	Photo	
<b>Storage and transmission</b>		
Storage media	TF card (16 GB and up to 32 GB)	
Image storage	JPG with temp info	
External interface	TYPE-C, TF card slot, UNC ¼"-20 (tripod mounting)	
WIFI	/	Yes, it can be connected to the mobile terminal for image transmission
<b>Power system</b>		
Battery type	Rechargeable lithium-ion battery, non-removable	
Battery working time	≥8 hours	≥5 hours
Charging mode	TYPE-C charging; PC/portable charger; Capable of charging while using	
Charging time	90% of full charge in 2.5 hours	
<b>Environmental parameters</b>		
Working temperature	-10°C to 50°C	
Storage temperature	-40°C to 70°C	
IP rating	IP54	
Drop	2m drop test	
Certification	CE, FCC, ROHS, KCC, IP54, 2m drop test, Damp heat test, Vibration test, Shock test, Impact test, UN38.3, MSDS	
<b>Physical parameters</b>		
Hardware	Laser Indicator	Laser Indicator, Illuminator
Weight	≤350 g	
Size (L × W × H)	194 × 61.5 × 76 mm	
Software kit	PC: ThermoTools	PC: ThermoTools; Mobile: Thermography (iOS/Android)
Standard	A device, Wrist strap, Quick Start Guide, Power adapter, Adapter plug, Type-C USB cable, Data download card, TF card (16 GB), Certificate of approval	
Options	Tripod	