

closer to the climate



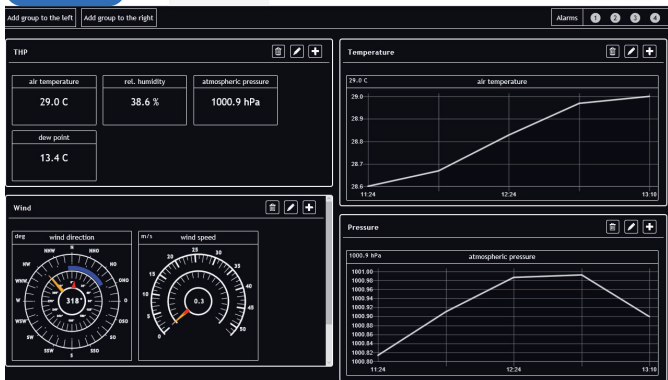
Wetterstation EXPERT

LAMBRECHT meteo

Lambrecht meteo is your partner for customised systems and high-quality standard stations.

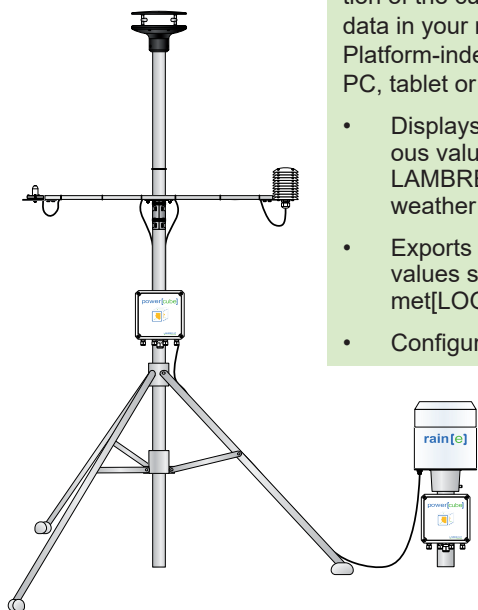
EXPERT is the weather station for the professionals. The station consists of high-quality sensors and powerful communication technology. Using single sensors has many advantages:

- ✓ The sensors work independently of each other, i.e. there is no mutual, negative influence on the measurements.
- ✓ High flexibility and expandability of the station, as the various parameters are recorded separately.
- ✓ High operational reliability of the entire station, as each sensor can be replaced individually.
- ✓ Due to their long service life, the single sensors perform efficiently, reliably and economically.



met[APP] · Our browser app which is integrated in the met[LOG] · for easy visualisation of the current weather data in your network. Platform-independent on your PC, tablet or smartphone.

- Displays the instantaneous values of your LAMBRECHT meteo weather station
- Exports the measured values stored by the met[LOG]
- Configures the met[LOG]



Ultrasound sensor u[sonic]
for wind speed and direction · sea-water resistant sensor, perfectly heated · easy installation and maintenance-free



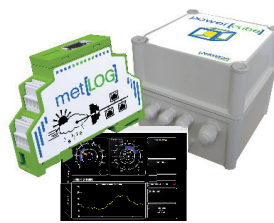
Precipitation sensor rain[e]
Latest weighing technology combined with a self-emptying collecting system · amazing resolution and accuracy · compact and robust construction with a very low weight · weatherproof and durable



Combined Sensor THP[pro]
Temperature, humidity, air pressure
Proven environmental measurement technology · sensor shelter, also ventilated as an option



Digital "Secondary Standard" Pyranometer sun[e] Modbus
Highest accuracy and data availability · with new ventilation and heating technology



Data logger met[LOG]
Plug & play · visualisation in web browser · alarm generation with hysteresis or window function; alarm output via 4 digital outputs, 8 logically connectable warning channels

power[cube]: all-weather-resistant power pack · rounds off the station regarding power supply and communication.

MeteoWare-CS (option)
Professional software for data visualisation, storage and export

Mast system
Modular mast system with sensor adapters and clamps · for meteorological sensors

closer to the climate



Wetterstation EXPERT



Your advantages

- LAMBRECHT meteo environmental measurement stations are completely preconfigured.
- Easy installation, and the wiring needs minimal effort.
- Sensors are extraordinary precise, robust and durable.
- Data storage lasts for a whole year.
- Minimal maintenance costs due to best product quality
- Continuous data transfer via Ethernet protects against data lost.
- Evaluation software and cable are included in scope of delivery.

Technical data

Operating temp. range:	-30...+70 °C
Supply:	90...264 VAC
Power rating:	480 W
Output power supply:	24 VDC

Possible applications:

- professional meteorology
- hydrology
- Weather services
- severe weather warning
- high-precision measurements

Weather station EXPERT

consisting of:

Ultrasonic wind sensor u[sonic]

Wind direction Meas. range: 0...359.9°
Accuracy: < 2° (> 1 m/s) RMSE

Wind speed Meas. range: 0...75 m/s
Accuracy: ± 0.2 m/s RMSE ($v < 10$ m/s);
± 2 % RMSE (10 m/s < $v < 65$ m/s)

Precipitation sensor rain[e]

Meas. range: 0...20 mm/min resp. 0...1200 mm/h
Resolution: 0.001 mm/min resp. 0.001 mm/h
Accuracy: ± 0.1 mm/min resp. ± 6 mm/h

Temperature/Humidity/Air Pressure Sensor THP[pro]

Temperature Measuring range: -40...+70 °C
Resolution: 0.1 °C
Accuracy: ± 0.1 K (0...60 °C) • ± 0.2 K (-40...0 °C)

Relative humidity Measuring range: 0...100 % r. h.
Resolution: 0.1 % r. h.
Accuracy:
typ. ± 1.5 % (0...80 %) r. h. • ± 2 % (>80 %) r. h.

Barometric Pressure Measuring range: 500...1100 hPa
Resolution: 0.1 hPa
Accuracy: ± 2 hPa (-30...+70 °C) •
± 1 hPa (-10...+60 °C)

Sensor shelter (8141.6)

11 lamellas, natural ventilation of the sensors

Pyranometer sun[e] Modbus · Secondary Standard

Measuring range: -400...4000 W/m² •
global radiation within a range of 285...3000 nm

Data logger met[LOG]

Ethernet: 10/100 BaseT • connector RJ45 shielded
Interface: 3 x RS 485 (1 x freely configurable)
Input: 4 analogue/ digital inputs (2 x freely configurable)

Power supply power[cube]

Power: 480 W
Output: 24 VDC

Tripod mast, height 3 m, aluminium-made, with mounting material